



CREATOR OF BOAT SYSTEMS

# BOW PRO THRUSTERS

Total control at  
your fingertips



VETUS proportional thruster solutions  
**BOWA | BOWB**



## Manoeuvre your boat the way you want it

With a BOW PRO on board, you can avoid the worry and be confident in your docking skills. A BOW PRO enables a stress-free docking moment and total control in tight spaces.



## REVOLUTIONARY CONCEPT MATCHED WITH PROVEN TECHNOLOGY

VETUS BOW PRO's are fully proportional and equipped with brushless induction motors, requiring zero maintenance and allowing much longer run times. The efficiency of proprietary VETUS technologies will give you not only a powerful and reliable thruster, but one which significantly improves your manoeuvrability and boating experience.

## THE TECHNOLOGICAL LEAP OF A BOW PRO

*Fully proportional control*

*Unlimited runtimes\**

*Maintenance-free brushless induction motor*

*Highly efficient thruster system*

*Built-in over-temp and low battery protection*

*Interchangeable with existing thrusters (shared tunnel sizes)*



### Integration with outboard engines

VETUS collaborated with market leaders Yamaha and Mercury to enable the integration of all BOW PRO and RIMDRIVE thrusters with their outboard engine systems. This collaboration created a compelling solution to ease and enhance the piloting and docking experience for boaters. With one single-control device, you have precise command of the outboard engines and thruster.

\* BOW PRO thrusters will run continuously for 6 or 10 minutes (dependent on thruster model) at full power, after that the power may be reduced. At a setting less than full power, run time is greatly enhanced. To achieve these results, the installer must adhere to installation instructions.

## LEADING RELIABILITY AND PERFORMANCE

The BOW PRO thruster series is V-CAN canbus controlled by the patented VETUS motor controller (MCV), which features built-in over temp and low battery protection. Those built-in safeties combined with the brushless induction motor make the BOW PRO thruster series perfectly suitable for intensive use and therefore ideal for every boater in the most difficult manoeuvring situations.

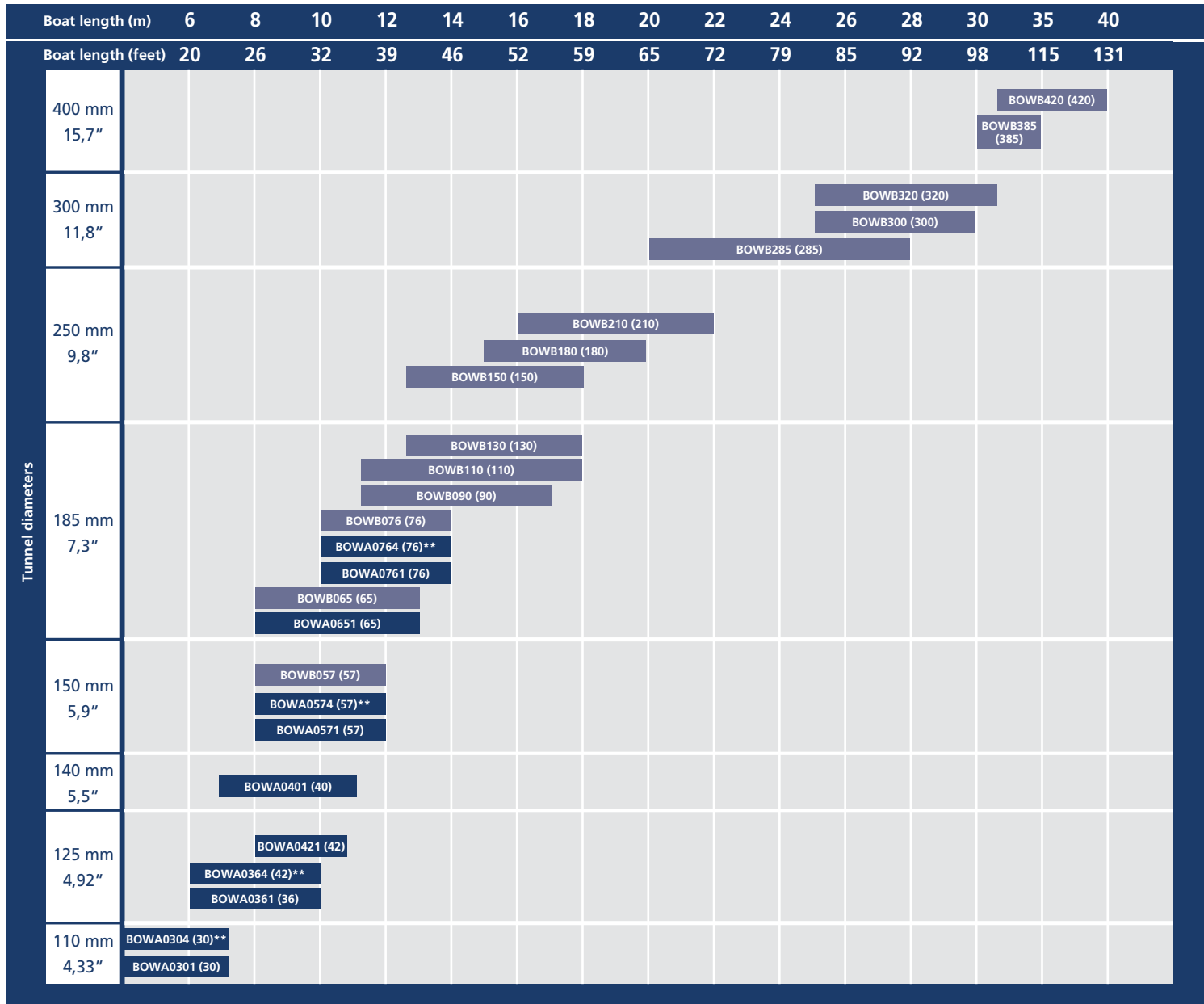
The BOW PRO Boosted (BOWB models) include an exclusive built in DC-to-DC smart charger function that allows 24 VDC thruster battery banks to be charged by a 12 VDC power supply and in the case of 48 VDC, to be charged from an existing 24 VDC power supply.

### ■ BOWA Series

- A range of thrusters with thrust outputs ranging from 30 kgf to 76 kgf
- Battery powered at 12 VDC or 48 VDC
- Runtime of 10 minutes at full power and even longer at reduced power

### ■ BOWB Boosted Series

- A range of thrusters with thrust outputs ranging from 57 kgf to 420 kgf
- Battery powered at 12/24 VDC or 24/48 VDC
- Runtime of 10 minutes at full power and even longer at reduced power

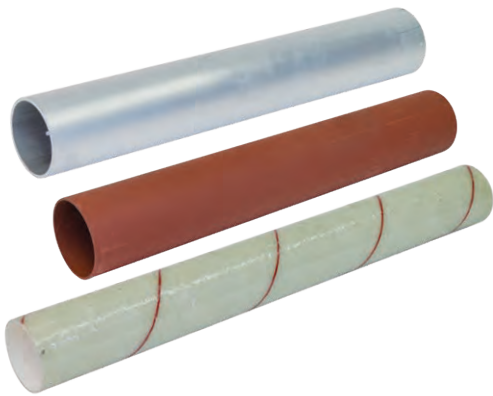


## CONTROLS - Fully proportional control panels

To get the most out of your BOW PRO, pair your thruster with one of our proportional control joysticks.



Type	Description	Proportional control	Lock & hold function	Twist function	Second connector for multiple stations	Control panel cover
BPPPA	Single thruster panel (paddle)	✓			✓	BPPJACV2
BPPJA	Single thruster panel (joystick)	✓	✓		✓	BPPJACV3
DBPPJA	Double thruster panel (joystick)	✓	✓	✓	✓	BPPJACV1



## TUNNELS - Ultimate strength

GRP, steel, or aluminum. The choice is yours.

Our tunnels are available in several materials, lengths, and diameters, besides being purpose built for all VETUS thrusters.

A range of tunnels with measurements ranging from 110 to 400 mm in diameter, and 750 to 3000 mm in length. It's freedom to choose what suits your boat best.



### Global Network

With the widest dealer and technical assistance network, we got you covered wherever you happen to be sailing.



### Service and Warranty

Industry-leading service and support with 3 year warranty on all thruster equipment.

Discover our complete line-up of bow and stern thrusters



WWW.VETUS.COM



CHECK OUR SOCIALS

